

Zoning District Map

- Legend**
- Rural Municipality Boundary
 - Urban Municipalities
 - Provincial Park
- Zoning Districts**
- A - Agricultural
 - AR - Agricultural Residential
 - C - Commercial
 - CR1 - Low Density Country Residential
 - CR2 - Medium Density Country Residential
 - H - Hamlet
 - M - Industrial

This is the Zoning District Map which accompanies Bylaw Number 3/18 adopted by the Rural Municipality of Vanscoy No. 345.

Reeve Administrator

The accuracy & completeness of information shown on this drawing is not guaranteed. It will be the responsibility of the user of the information shown on this drawing to locate & establish the precise location of all existing information whether shown or not.



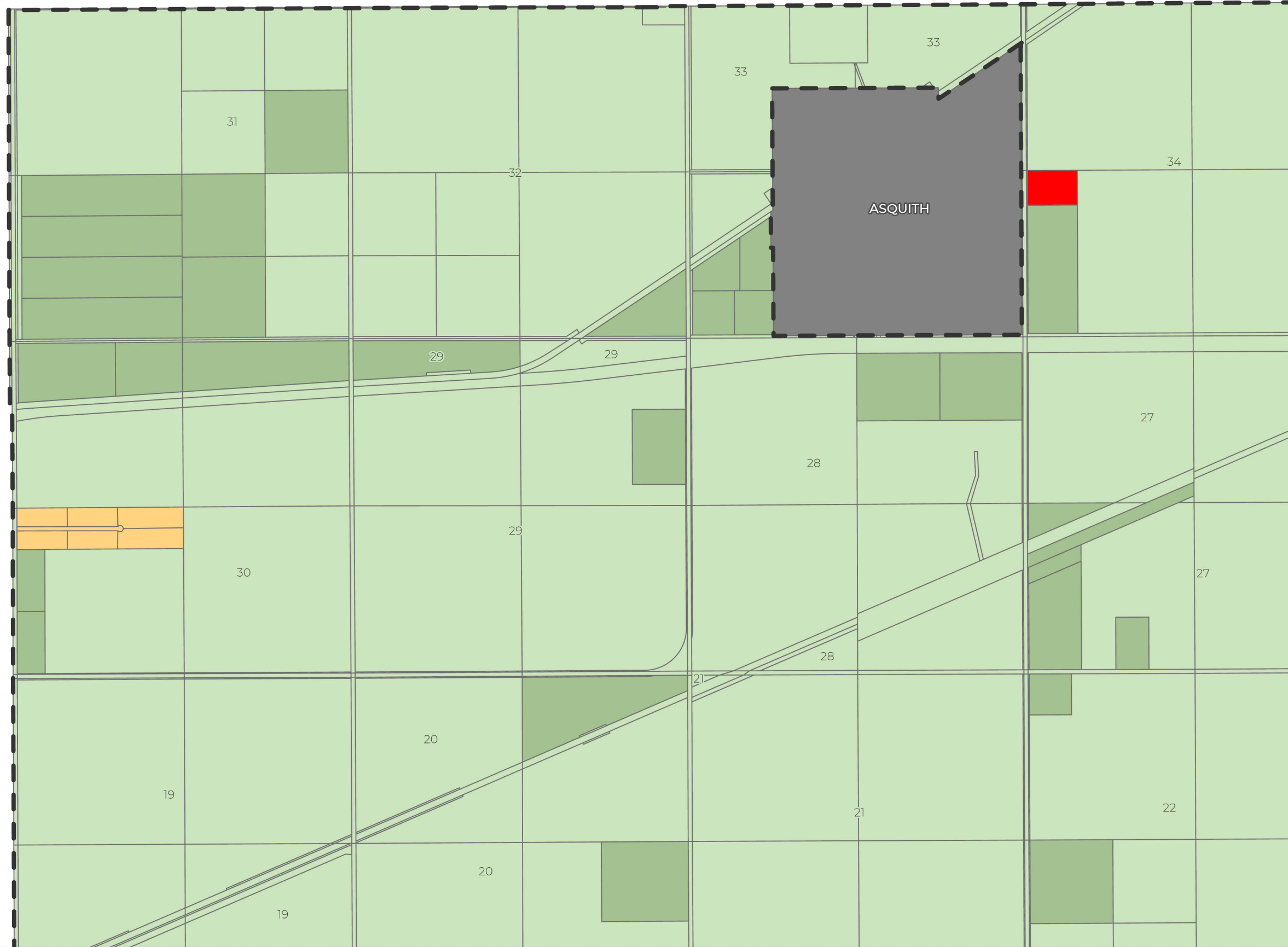
Coordinate System: NAD 1983 CSRS UTM Zone 13N
Scale: 1:120,000 (When plotted at 11"x17")

Data Sources:
- Data provided by the Rural Municipality of Vanscoy

Project #: 3861.0001.01
 Author: TS
 Checked: CW
 Status: Final
 Revision: A
 Date: 2022 / 8 / 18




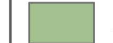




FIGURE 1.0



Zoning District Map Sheet 1

Legend

-  Rural Municipality Boundary
-  Urban Municipalities
- Zoning Districts**
-  A - Agricultural
-  AR - Agricultural Residential
-  C - Commercial
-  CR2 - Medium Density Country Residential

This is the Zoning District Map which accompanies Bylaw Number 3/18 adopted by the Rural Municipality of Vanscoy No. 345.

Reeve

Administrator

The accuracy & completeness of information shown on this drawing is not guaranteed. It will be the responsibility of the user of the information shown on this drawing to locate & establish the precise location of all existing information whether shown or not.



Coordinate System: NAD 1983 CSRS UTM Zone 13N
Scale: 1:20,000
 (When plotted at 11"x17")

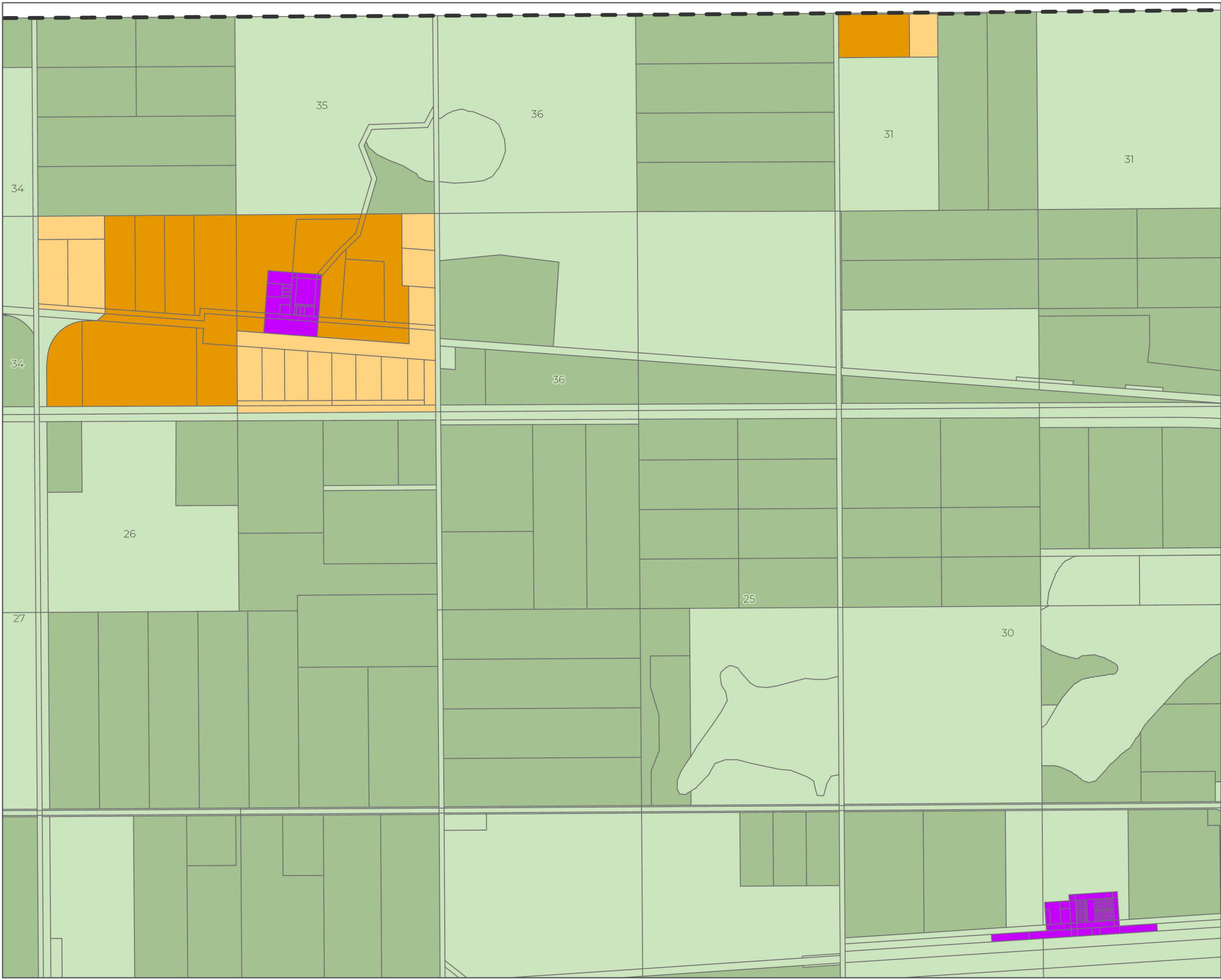
Data Sources:

- Data provided by the Rural Municipality of Vanscoy

Project #: 3861.0001.01
Author: TS
Checked: CW
Status: Final
Revision: A
Date: 2022 / 8 / 18



FIGURE 1.1



Zoning District Map Sheet 2

Legend

Rural Municipality Boundary

Zoning Districts

- A - Agricultural
- AR - Agricultural Residential
- CR1 - Low Density Country Residential
- CR2 - Medium Density Country Residential
- H - Hamlet

This is the Zoning District Map which accompanies Bylaw Number 3/18 adopted by the Rural Municipality of Vanscoy No. 345.

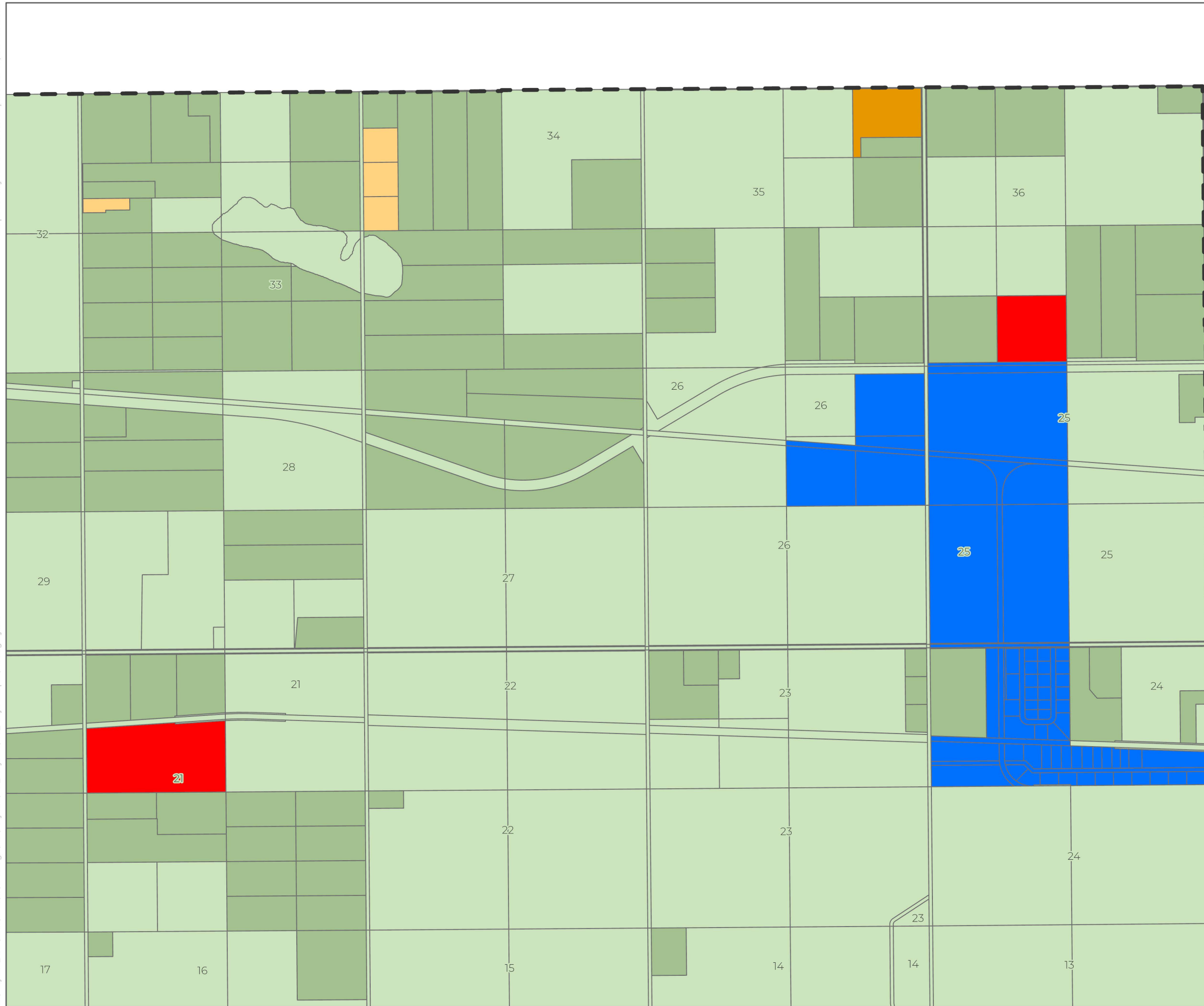
Reeve Administrator

The accuracy & completeness of information shown on this drawing is not guaranteed. It will be the responsibility of the user of the information shown on this drawing to locate & establish the precise location of all existing information whether shown or not.

0 0.5
 Kilometers
Coordinate System: NAD 1983 CSRS UTM Zone 13N
Scale: 1:15,000
 (When plotted at 11"x17")
Data Sources:
 - Data provided by the Rural Municipality of Vanscoy

Project #: 3861.0001.01
Author: TS
Checked: CW
Status: Final
Revision: A
Date: 2022 / 8 / 18

URBAN
S Y S T E M S
FIGURE 1.2



Zoning District Map Sheet 3

Legend

Rural Municipality Boundary

Zoning Districts

- A - Agricultural
- AR - Agricultural Residential
- C - Commercial
- CR1 - Low Density Country Residential
- CR2 - Medium Density Country Residential
- M - Industrial

This is the Zoning District Map which accompanies Bylaw Number 3/18 adopted by the Rural Municipality of Vanscoy No. 345.

Reeve

Administrator

The accuracy & completeness of information shown on this drawing is not guaranteed. It will be the responsibility of the user of the information shown on this drawing to locate & establish the precise location of all existing information whether shown or not.



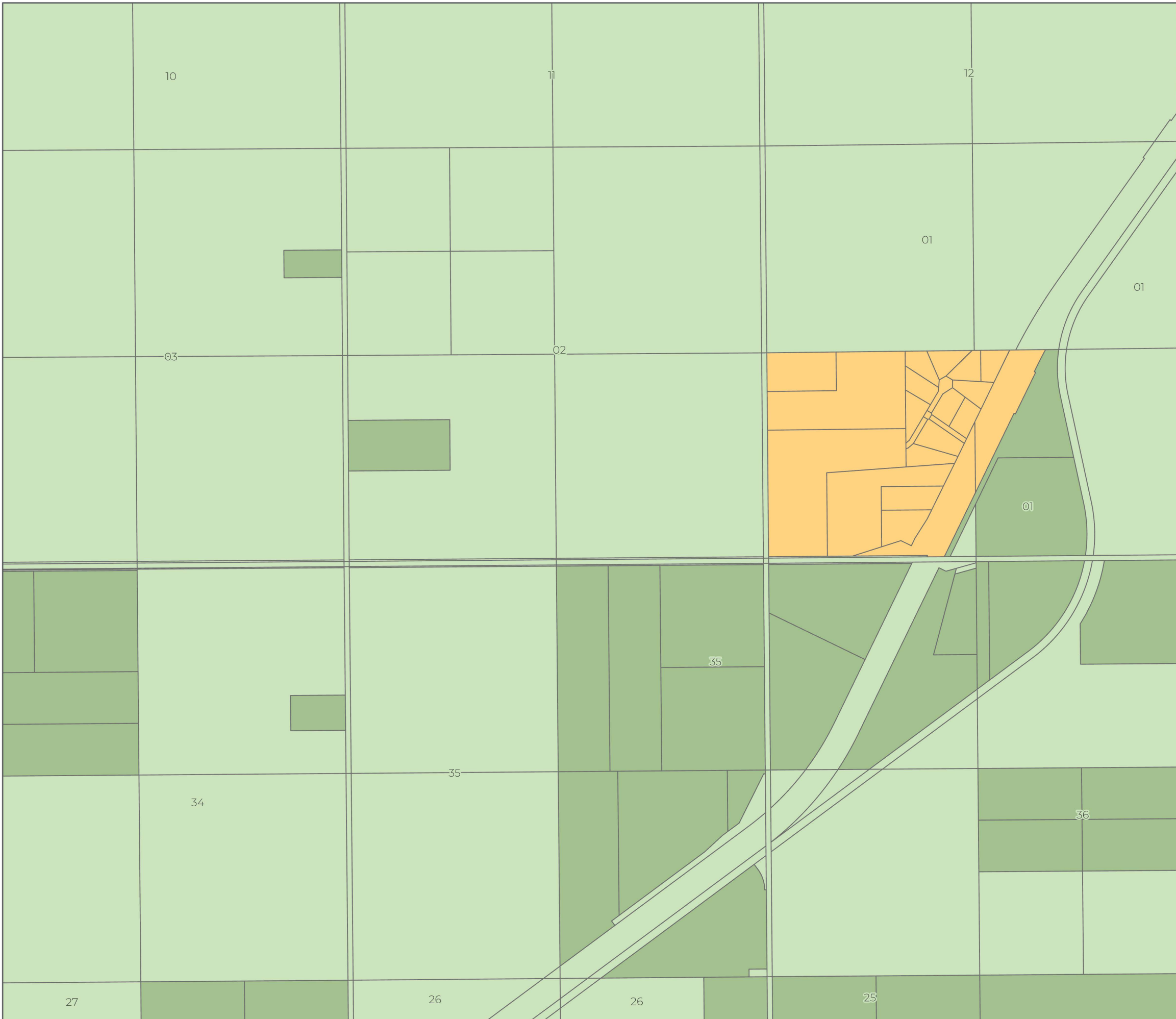
Coordinate System: NAD 1983 CSRS UTM Zone 13N
Scale: 1:22,000 (When plotted at 11"x17")

Data Sources:
 - Data provided by the Rural Municipality of Vanscoy

Project #: 3861.0001.01
 Author: TS
 Checked: CW
 Status: **Final**
 Revision: A
 Date: 2022 / 8 / 18



FIGURE 1.3



Zoning District Map Sheet 4

Legend

Rural Municipality Boundary

Zoning Districts

- A - Agricultural
- AR - Agricultural Residential
- CR2 - Medium Density Country Residential

This is the Zoning District Map which accompanies Bylaw Number 3/18 adopted by the Rural Municipality of Vanscoy No. 345.

Reeve

Administrator

The accuracy & completeness of information shown on this drawing is not guaranteed. It will be the responsibility of the user of the information shown on this drawing to locate & establish the precise location of all existing information whether shown or not.

0 0.5

 Kilometers N

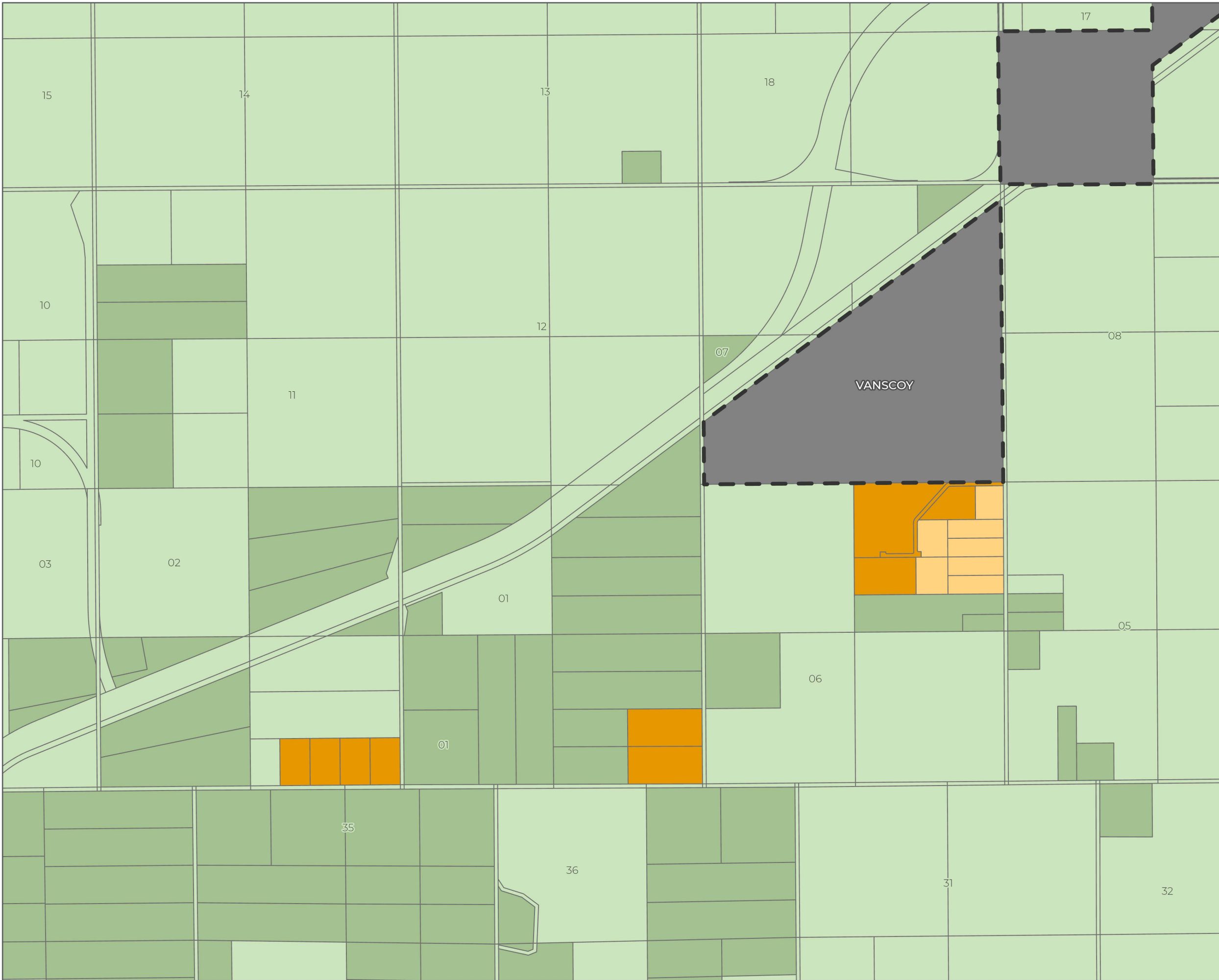
Coordinate System: NAD 1983 CSRS UTM Zone 13N **Scale:** 1:15,000
 (When plotted at 11"x17")

Data Sources:
 - Data provided by the Rural Municipality of Vanscoy

Project #: 3861.0001.01
Author: TS
Checked: CW
Status: Final
Revision: A
Date: 2022 / 8 / 18









FIGURE 1.4



Zoning District Map Sheet 5

Legend

-  Rural Municipality Boundary
-  Urban Municipalities
- Zoning Districts**
-  A - Agricultural
-  AR - Agricultural Residential
-  CR1 - Low Density Country Residential
-  CR2 - Medium Density Country Residential

This is the Zoning District Map which accompanies Bylaw Number 3/18 adopted by the Rural Municipality of Vanscoy No. 345.

Reeve

Administrator

The accuracy & completeness of information shown on this drawing is not guaranteed. It will be the responsibility of the user of the information shown on this drawing to locate & establish the precise location of all existing information whether shown or not.



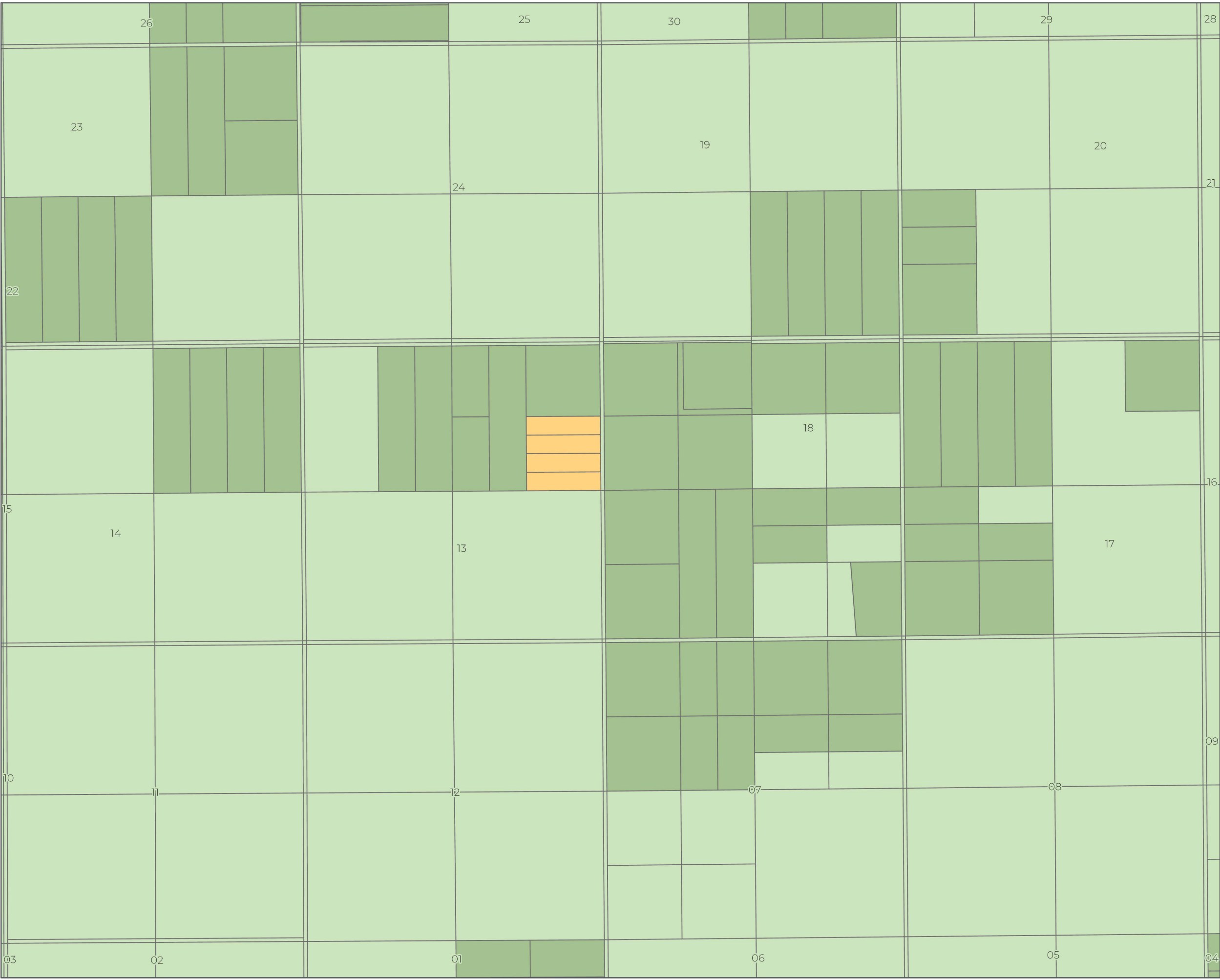
Coordinate System: NAD 1983 CSRS UTM Zone 13N
Scale: 1:20,000 (When plotted at 11"x17")

Data Sources:
 - Data provided by the Rural Municipality of Vanscoy

Project #: 3861.0001.01
Author: TS
Checked: CW
Status: Final
Revision: A
Date: 2022 / 8 / 18



FIGURE 1.5



Zoning District Map Sheet 6

Legend

Rural Municipality Boundary

Zoning Districts

- A - Agricultural
- AR - Agricultural Residential
- CR2 - Medium Density Country Residential

This is the Zoning District Map which accompanies Bylaw Number 3/18 adopted by the Rural Municipality of Vanscoy No. 345.

Reeve Administrator

The accuracy & completeness of information shown on this drawing is not guaranteed. It will be the responsibility of the user of the information shown on this drawing to locate & establish the precise location of all existing information whether shown or not.



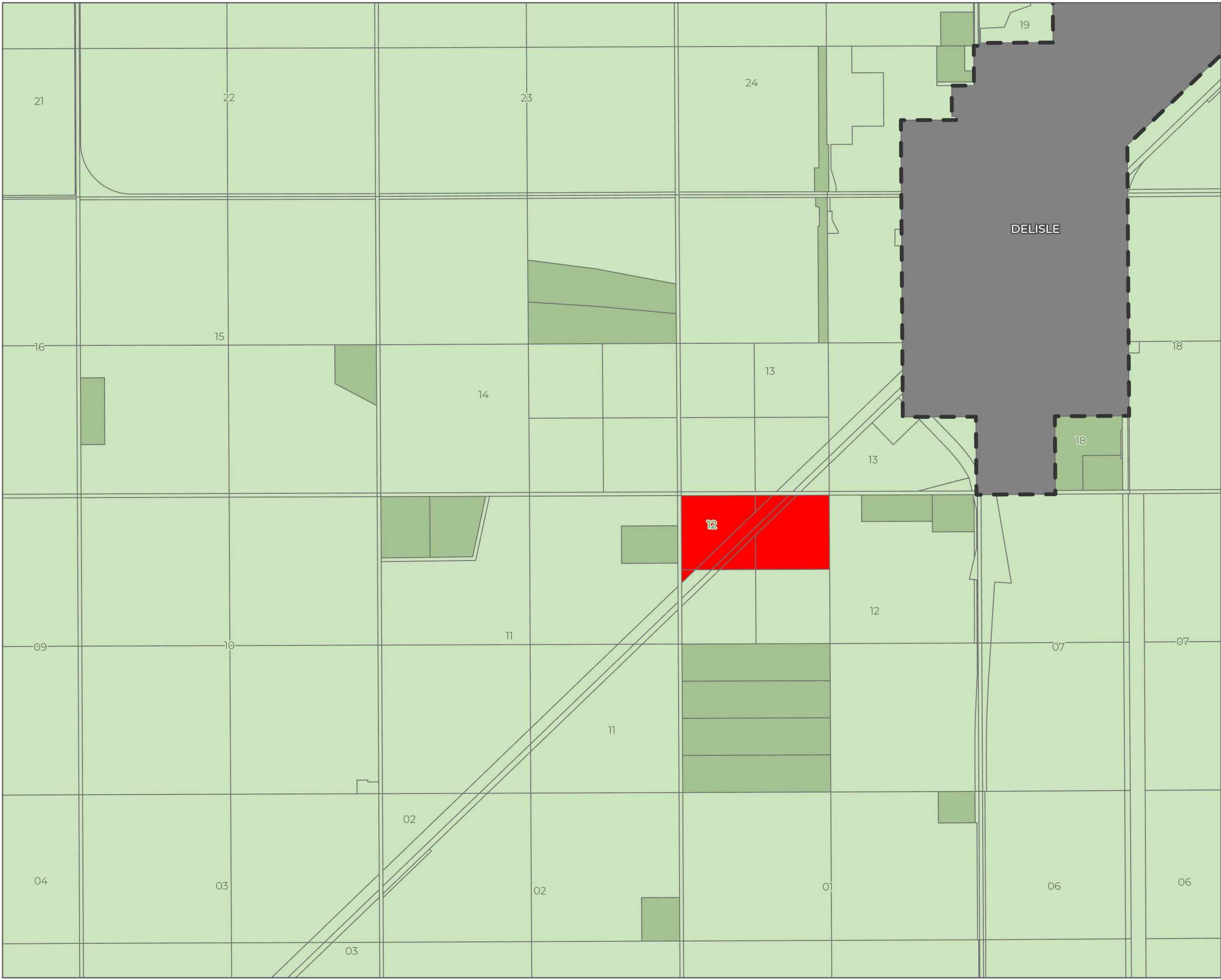
Coordinate System: NAD 1983 CSRS UTM Zone 13N
Scale: 1:20,000 (When plotted at 11"x17")

Data Sources:
 - Data provided by the Rural Municipality of Vanscoy

Project #: 3861.0001.01
Author: TS
Checked: CW
Status: Final
Revision: A
Date: 2022 / 8 / 18



FIGURE 1.6



Zoning District Map Sheet 7

- Legend**
- Rural Municipality Boundary
 - Urban Municipalities
- Zoning Districts**
- A - Agricultural
 - AR - Agricultural Residential
 - C - Commercial

This is the Zoning District Map which accompanies Bylaw Number 3/18 adopted by the Rural Municipality of Vanscoy No. 345.

Reeve _____ Administrator _____

The accuracy & completeness of information shown on this drawing is not guaranteed. It will be the responsibility of the user of the information shown on this drawing to locate & establish the precise location of all existing information whether shown or not.

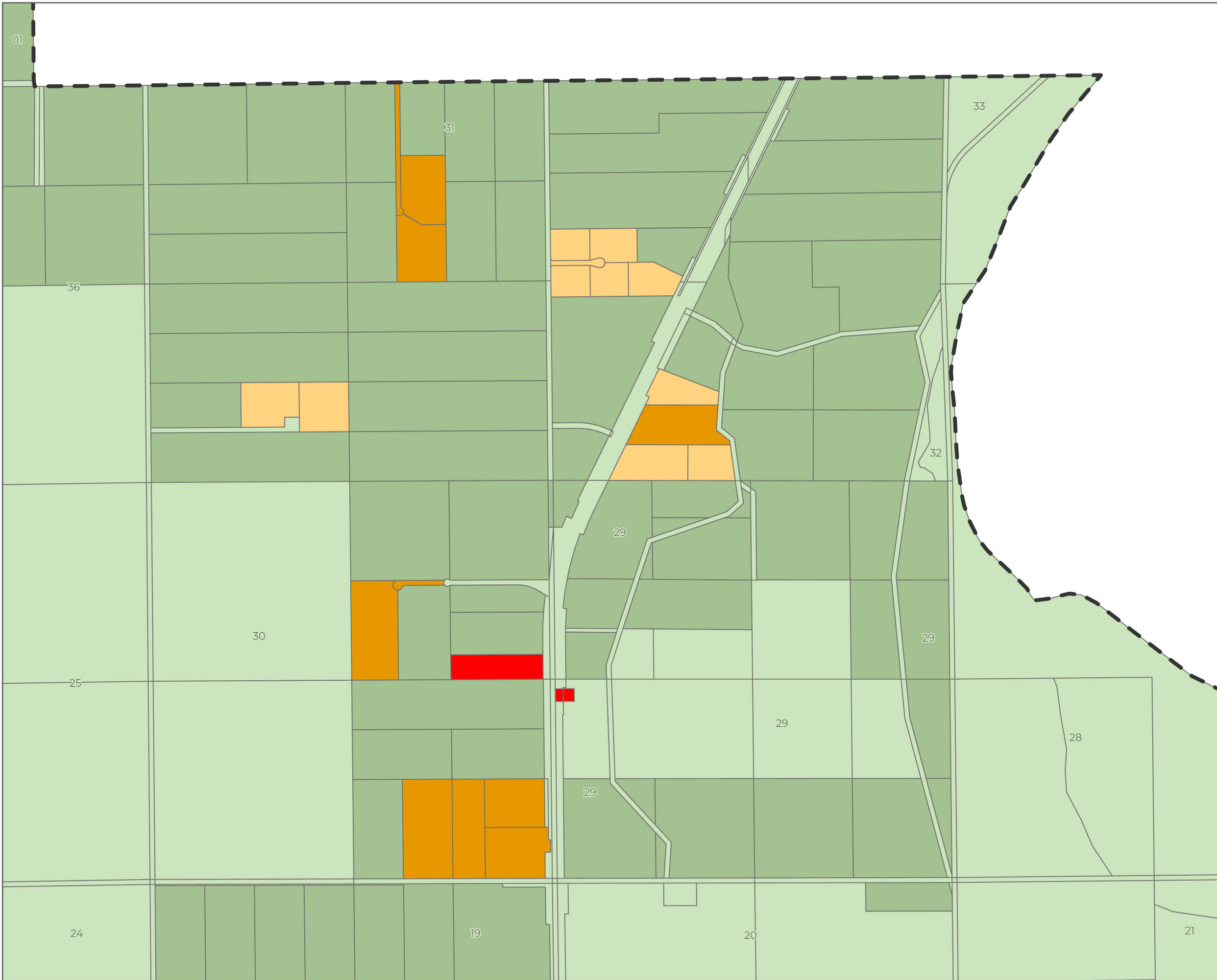


Coordinate System: NAD 1983 CSRS UTM Zone 13N
Scale: 1:20,000 (When plotted at 11"x17")

Data Sources:
 - Data provided by the Rural Municipality of Vanscoy

Project #: 3861.0001.01
Author: TS
Checked: CW
Status: Final
Revision: A
Date: 2022 / 8 / 18





Zoning District Map Sheet 8

Legend

Rural Municipality Boundary

Zoning Districts

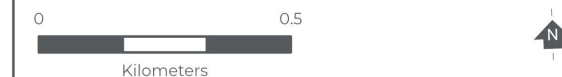
- A - Agricultural
- AR - Agricultural Residential
- C - Commercial
- CR1 - Low Density Country Residential
- CR2 - Medium Density Country Residential

This is the Zoning District Map which accompanies Bylaw Number 3/18 adopted by the Rural Municipality of Vanscoy No. 345.

Reeve

Administrator

The accuracy & completeness of information shown on this drawing is not guaranteed. It will be the responsibility of the user of the information shown on this drawing to locate & establish the precise location of all existing information whether shown or not.



Coordinate System: NAD 1983 CSRS UTM Zone 13N
Scale: 1:15,000
 (When plotted at 11"x17")

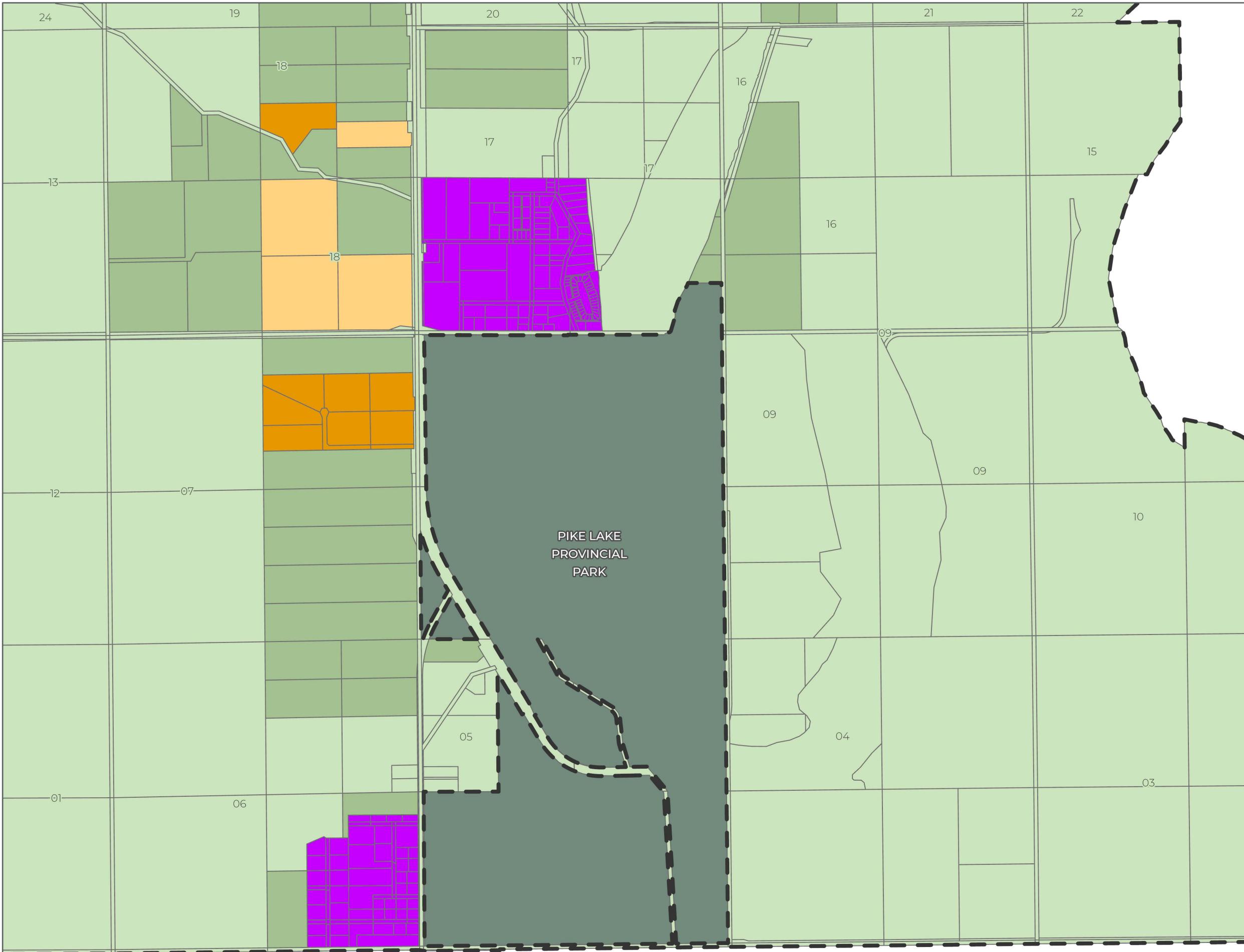
Data Sources:
 - Data provided by the Rural Municipality of Vanscoy

Project #: 3861.0001.01
 Author: TS
 Checked: CW
 Status: **Final**
 Revision: A
 Date: 2022 / 8 / 18





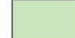




FIGURE 1.8

Last updated by TShewchuk on August 18, 2022 at 11:09 AM
 Last exported by TShewchuk on August 18, 2022 11:09 AM
 Last printed by TShewchuk on September 25, 2017 11:46 AM



Zoning District Map Sheet 9

Legend

-  Rural Municipality Boundary
-  Provincial Park
- Zoning Districts**
-  A - Agricultural
-  AR - Agricultural Residential
-  CR1 - Low Density Country Residential
-  CR2 - Medium Density Country Residential
-  H - Hamlet

This is the Zoning District Map which accompanies Bylaw Number 3/18 adopted by the Rural Municipality of Vanscoy No. 345.

Reeve _____

Administrator _____

The accuracy & completeness of information shown on this drawing is not guaranteed. It will be the responsibility of the user of the information shown on this drawing to locate & establish the precise location of all existing information whether shown or not.



Coordinate System: NAD 1983 CSRS UTM Zone 13N
Scale: 1:20,000
 (When plotted at 11"x17")

Data Sources:
 - Data provided by the Rural Municipality of Vanscoy

Project #: 3861.0001.01
 Author: TS
 Checked: CW
 Status: **Final**
 Revision: A
 Date: 2022 / 8 / 18



U:\Projects_KEL\3861\0001\01\1D-Design\GIS\Projects\Pro_Projects\prx\Zoning Bylaw